

# Best Practices 2018-19

## Best Practice I:

### Title: Stationery and Photo Copy Shop

#### Objectives of the Practice:

Ismail Yusuf College is blessed to have a verdant campus of nearly 55 acres and recognized the inconvenience faced by students who had to venture outside the campus for basic stationery and photocopying services. In response, the college took proactive steps to establish an on-campus Stationery Store with a Photo Copy Shop, greatly benefiting the student community. A separate structure was constructed near the University Counters to meet the stationery requirement of students. The store also offers print and Xerox facility to students at very reasonable rates.

#### The Practice:

##### 1. Convenience and Accessibility:

The Stationery Store and Photo Copy Shop are located close to Main Building and Administrative units within the college campus, ensuring easy access for students and faculty members.

It eliminates the need for students to travel outside the campus for essential stationery items and photocopying services, thereby saving time and enhancing convenience.

##### 2. Range of Services:

The Stationery Store stocks a comprehensive range of items such as notebooks, pens, pencils, folders, journals and other academic supplies required by students on a regular basis.

The Photo Copy Shop offers photocopying, printing, and scanning services, catering to academic and administrative needs within the college.

##### 3. Impact on Student Community:

The establishment of these facilities has significantly improved the overall student experience by providing essential services in a convenient and accessible manner.

It has contributed to a more efficient learning environment where students can quickly access necessary materials and complete academic tasks without disruptions.

### **Evidence of Success:**

The availability of on-campus stationery and photocopying services enhances the college's infrastructure and supports its commitment to student welfare and academic excellence.

It fosters a sense of belonging among students and promotes a productive academic environment conducive to learning and personal development.

### **Problems Encountered and Resources Required:**

Getting permission to build an exclusive facility.

Periodic maintenance.

### **Future Plans:**

Expand the range of services offered based on student feedback and evolving academic needs, potentially including additional amenities like binding services or digital access points.

Implement initiatives to promote sustainability, such as using eco-friendly stationery options and minimizing paper waste through efficient photocopying practices.



The creation of the Stationery and Photo Copy Shop at Ismail Yusuf College reflects its commitment to enhancing student convenience and supporting academic success.

## **Best Practice II:**

### **Title: Joggers Park**

Joggers Park:

#### **Objectives of the Practice:**

Ismail Yusuf College campus serves a dual role as an educational institution and a community hub, offering the local community a valuable space for morning walks through its Joggers Park. This initiative not only benefits the community but also integrates eco-friendly initiatives and community engagement activities.

#### **The Context:**

The College campus is the only open space available to the local community for the morning walk. The Joggers Park facilitates the local community and college students especially the NCC Cadets to move around the campus without disturbing the academic activities in the college. The Joggers Park also allows the college to interact with locals who are eager to contribute in various eco initiatives being conducted by the College. The college has formed a Morning-Walkers group of such enthusiastic people. The Morning Walkers group offered to water the trees along the joggers park. The College quickly reacted by making the provision of water inside the joggers park.

#### **The Practice:**

##### **1. Community Access and Utilization:**

The college campus, with its Joggers Park, provides the only open space in the local area for community members, including college students and NCC Cadets, to engage in morning walks and recreational activities.

Joggers Track of 400 M was constructed.

The area around the track was later on fenced to protect plants.

Open Gym was also install for the benefit of visitors.

The facility is available free of cost to the visitors.

This facility supports the health and well-being of the local residents while ensuring that academic activities within the college are undisturbed.

## 2. Community Engagement and Eco Initiatives:

The Joggers Park serves as a platform for the college to interact with local residents who are interested in contributing to various eco initiatives undertaken by the college.

A dedicated Morning Walkers group comprising enthusiastic community members has been formed, fostering collaboration between the college and local stakeholders.

## 3. Infrastructure and Sustainability Measures:

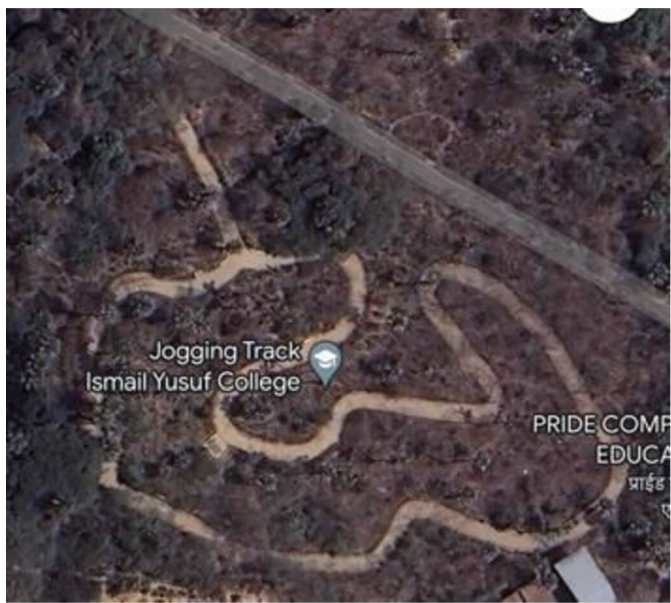
In response to community interest and involvement, the college has installed provisions for watering trees within the Joggers Park, facilitated by the Morning Walkers group.

Street lights and CC-TV network is provided along the track to ensure security of the visitors.

This initiative not only enhances the park's greenery but also promotes environmental stewardship and community participation in sustainable practices.

### Evidence of Success:

- ✚ The Joggers park is visited by more than 500 visitors daily.
- ✚ The Joggers Park initiative enhances community relations by providing a shared space for recreation and fostering a sense of ownership and pride among local residents.
- ✚ It supports the college's commitment to holistic education by promoting physical fitness, environmental awareness, and community engagement.



The Joggers Park at Ismail Yusuf College exemplifies the institution's proactive approach to community engagement, environmental sustainability, and holistic education. By providing a valuable recreational space and fostering collaborative eco initiatives, the college enhances its role as a community-centered educational institution.